

NEW PERMIT

- Summary
- Details
- Location
- Additional Info**
- Workflow
- Linked Records
- Holds (1)
- Contacts (1)
- Fees (1)
- Bonds
- Activities
- Files (8)
- Print Documents
- Conditions

A. PROJECT INFORMATION B. MAJOR PROJECT CHECKLIST C. MINOR PROJECT CHECKLIST D. EX

\$ 15 - Full ARB Review* 1	Does the Project involve Signage? Yes	If Yes, an ARB Sign Permit application is required.
\$ 5 - Mid-Month / Staff Review* 0	Does the Project involve Demolition? Yes	If Yes, an ARB Demolition application is required.
Cost of Project* \$2,000,000.00	Does the Project involve Tree Removal? No	If Yes, a site plan showing all trees and landscaping that will be removed is required.

Proposed Scope of Work

Construction of new 2,824 SF fueling station with 8 fueling islands under canopy.

APPROVED Scope of Work

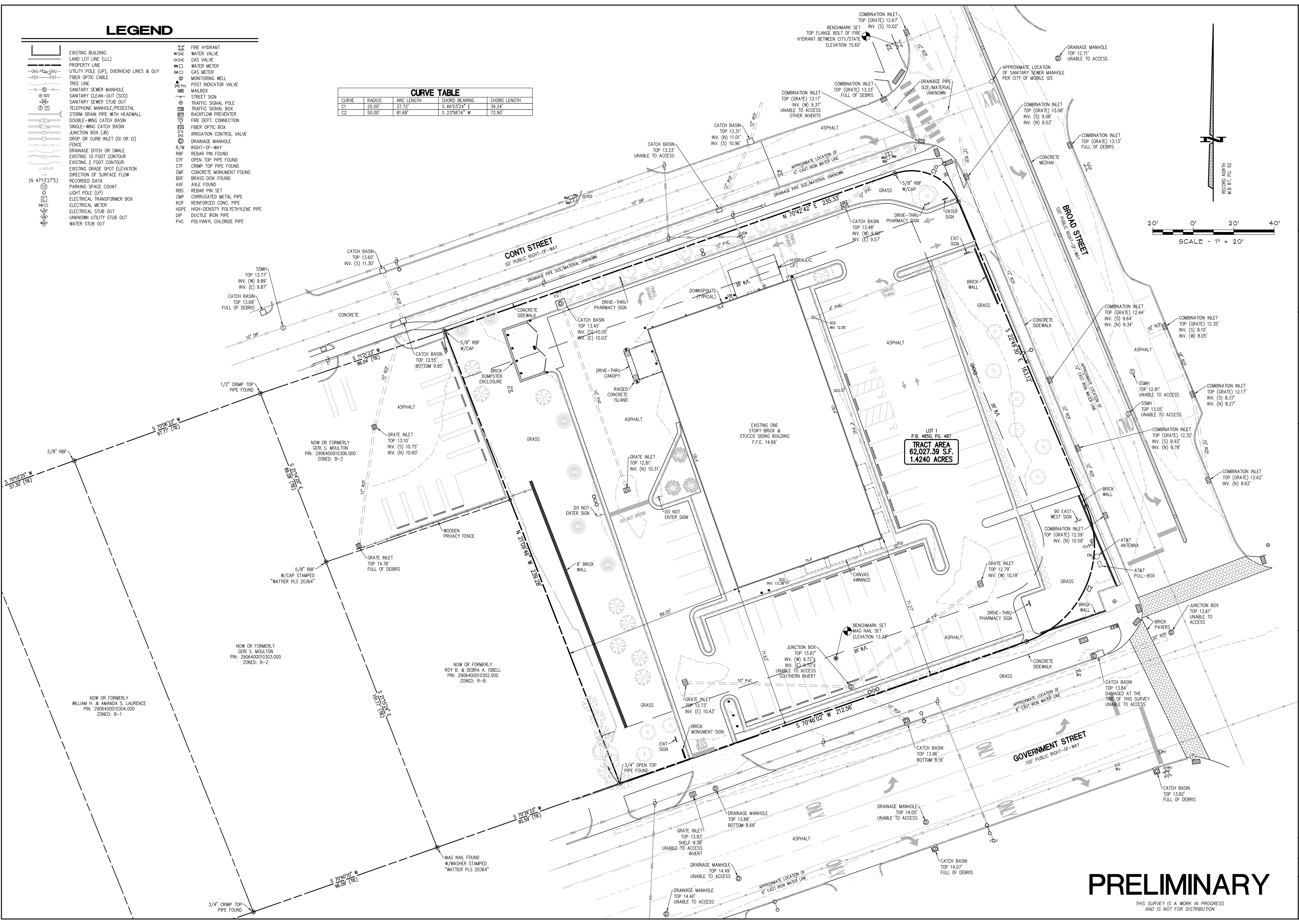
NOTE: The Approved Scope of Work must be inserted here in order for it to appear on the

LEGEND

- EXISTING BUILDING
- LAND LOT LINE (LL)
- PROPERTY LINE
- UTILITY POLE (UP), OVERHEAD LINES & GUY
- FIBER OPTIC CABLE
- TREE LINE
- SANITARY SEWER MANHOLE
- SANITARY CLEAN-OUT (SCO)
- SANITARY SEWER STUB OUT
- TELEPHONE MANHOLE/PEDESTAL
- STORM DRAIN PIPE WITH HEADWALL
- DOUBLE-WING CATCH BASIN
- SINGLE-WING CATCH BASIN
- JUNCTION BOX (JB)
- DROP OR CURB INLET (DI OR CI)
- FENCE
- DRAINAGE DITCH OR SWALE
- EXISTING 10 FOOT CONTOUR
- EXISTING 2 FOOT CONTOUR
- EXISTING GRADE SPOT ELEVATION
- DIRECTION OF SURFACE FLOW
- RECORDED DATA
- PARKING SPACE COUNT
- LIGHT POLE (LP)
- ELECTRICAL TRANSFORMER BOX
- ELECTRICAL METER
- ELECTRICAL STUB OUT
- UNKNOWN UTILITY STUB OUT
- WATER STUB OUT
- FIRE HYDRANT
- WATER VALVE
- GAS VALVE
- WATER METER
- GAS METER
- MONITORING WELL
- POST INDICATOR VALVE
- MAILBOX
- STREET SIGN
- TRAFFIC SIGNAL POLE
- TRAFFIC SIGNAL BOX
- BACKFLOW PREVENTER
- FIRE DEPT. CONNECTION
- FIBER OPTIC BOX
- IRRIGATION CONTROL VALVE
- DRAINAGE MANHOLE
- R/W
- RIGHT-OF-WAY
- REBAR PIN FOUND
- OTF
- OPEN TOP PIPE FOUND
- CTF
- CRIMP TOP PIPE FOUND
- CMF
- CONCRETE MONUMENT FOUND
- BDP
- BRASS DISK FOUND
- AXF
- AXLE FOUND
- RBS
- REBAR PIN SET
- CMP
- CORRUGATED METAL PIPE
- RCP
- REINFORCED CONC. PIPE
- HDPE
- HIGH-DENSITY POLYETHYLENE PIPE
- DIP
- DUCTILE IRON PIPE
- PVC
- POLYVINYL CHLORIDE PIPE

CURVE TABLE

CURVE	RADIUS	ARC LENGTH	CHORD BEARING	CHORD LENGTH
C1	25.00'	37.72'	S 66°32'4" E	34.24'
C2	50.00'	81.68'	S 23°56'16" W	72.90'



Bechtler Greenfield Surveying, LLC.
 1430 West Peachtree St. NW, Suite 225
 Atlanta, Georgia 30309
 Phone: (770) 222-8181
 Email: info@gsurveying.com

REVISIONS

NO.	DATE	DESCRIPTION
1		
2		
3		
4		

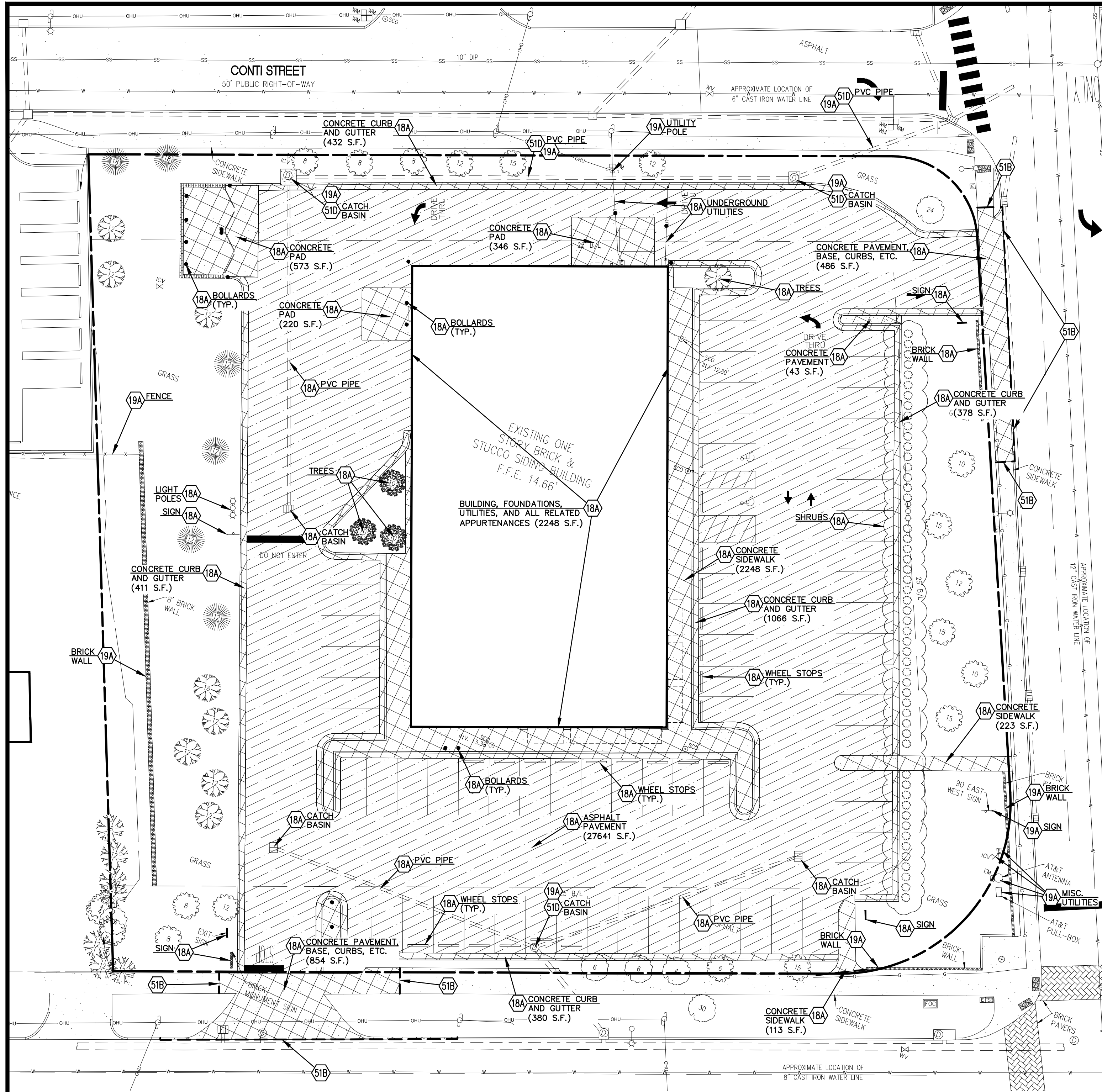
1.4240 ACRES
900 GOVERNMENT STREET
MOBILE, ALABAMA 36604

CITY OF MOBILE - MOBILE COUNTY - ALABAMA

ALTA/NSPS LAND TITLE SURVEY FOR
MURPHY OIL USA, INC. AND
FIDELITY NATIONAL TITLE INSURANCE COMPANY

PROJECT NO.
23-140-0
 DRAWING FILE:
 23-140-0 SURVEY.DWG
 SHEET NO.
S-2
 2 OF 2

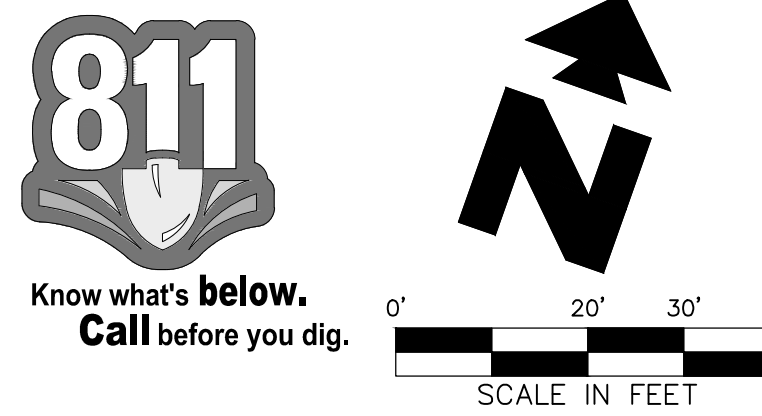
PRELIMINARY
 THIS SURVEY IS A WORK IN PROGRESS
 AND IS NOT FOR DISTRIBUTION



NOTE:
ALL TREES TO REMAIN AND
BE PROTECTED UNLESS
OTHERWISE INDICATED.

THESE DRAWINGS DO NOT INCLUDE
COMPONENTS FOR CONSTRUCTION SAFETY.

THE LOCATION OF EXISTING UNDERGROUND UTILITIES
ARE SHOWN IN AN APPROXIMATE WAY ONLY. THE
CONTRACTOR SHALL DETERMINE THE EXACT LOCATION
OF ALL EXISTING UTILITIES BEFORE COMMENCING
WORK. HE AGREES TO BE FULLY RESPONSIBLE FOR
ANY AND ALL DAMAGES WHICH MIGHT BE OCCASIONED
BY HIS FAILURE TO EXACTLY LOCATE AND PRESERVE
ANY AND ALL UNDERGROUND UTILITIES.



EXISTING	
—○—○—○—	PROPERTY LINE
—○—○—○—	UTILITY POLE (UP), OVERHEAD LINES & GUY
—○—○—○—	SANITARY SEWER MANHOLE (SSMH)
—○—○—○—	DOUBLE-WING CATCH BASIN
—○—○—○—	SINGLE-WING CATCH BASIN
—○—○—○—	FENCE
—○—○—○—	EXISTING 5 FOOT CONTOUR
—○—○—○—	EXISTING 1 FOOT CONTOUR
×950.1	EXISTING GRADE SPOT ELEVATION
(N 47°13'27"E)	RECORDED DATA
○	LIGHT POLE (LP)
⊕	FIRE HYDRANT
⊕	WATER VALVE
⊕	STREET SIGN
⊕	DRAINAGE MANHOLE
R/W	RIGHT-OF-WAY
R/B	REBAR PIN FOUND
R/B	REBAR PIN SET
CMP	REINFORCED CONC. PIPE
RCP	CORRUGATED METAL PIPE

PROPOSED	
---	BOUNDARY LINE
▨	EXISTING CONCRETE PAVEMENT & CURB TO BE REMOVED
▨	EXISTING ASPHALT PAVEMENT TO BE REMOVED
—○—○—○—	REMOVE EXISTING UTILITY
—○—○—○—	CUT AND CAP/DISCONNECT EXISTING UTILITY

GENERAL DEMOLITION NOTES

A. CONTRACTOR SHALL BE RESPONSIBLE FOR REMOVAL OF THE EXISTING STRUCTURES, RELATED UTILITIES, PAVING, UNDERGROUND STORAGE TANKS AND ANY OTHER EXISTING IMPROVEMENTS AS NOTED.

B. CONTRACTOR IS TO REMOVE AND DISPOSE OF ALL DEBRIS, RUBBISH AND OTHER MATERIALS RESULTING FROM PREVIOUS AND CURRENT DEMOLITION OPERATIONS. DISPOSAL WILL BE IN ACCORDANCE WITH ALL LOCAL, STATE AND/OR FEDERAL REGULATIONS GOVERNING SUCH OPERATIONS.

C. THE GENERAL CONTRACTOR SHALL TAKE ALL PRECAUTIONS NECESSARY TO AVOID PROPERTY DAMAGE TO ADJACENT PROPERTIES DURING THE CONSTRUCTION PHASES OF THIS PROJECT. THE CONTRACTOR WILL BE HELD SOLELY RESPONSIBLE FOR ANY DAMAGES TO THE ADJACENT PROPERTIES OCCURRING DURING THE CONSTRUCTION PHASES OF THIS PROJECT.

D. THE CONTRACTOR IS SPECIFICALLY CAUTIONED THAT THE LOCATION AND/OR ELEVATION OF EXISTING UTILITIES AS SHOWN ON THESE PLANS IS BASED ON RECORDS OF THE VARIOUS UTILITY COMPANIES, AND WHERE POSSIBLE, MEASUREMENTS TAKEN IN THE FIELD. THE INFORMATION IS NOT TO BE RELIED ON AS BEING EXACT OR COMPLETE. THE CONTRACTOR MUST CALL THE APPROPRIATE UTILITY COMPANY AT LEAST 72 HOURS BEFORE ANY EXCAVATION TO REQUEST EXACT FIELD LOCATION OF UTILITIES.

DEMOLITION NOTES	
17A	EXISTING TO BE RELOCATED
18A	EXISTING TO BE REMOVED
19A	EXISTING TO REMAIN
51B	LIMITS OF SAWCUT AND PAVEMENT REMOVAL
51D	PROTECT EXISTING STRUCTURE AND/OR PIPES DURING DEMOLITION AND CONSTRUCTION PHASES

SHEET NO. **C-2**

DEMOLITION PLAN
MURPHY USA (NTJ)
900 GOVERNMENT STREET
MOBILE ALABAMA

PAE JOB NO. 12724

PAN AMERICAN ENGINEERS, LLC
1717 JACKSON STREET
ALEXANDRIA, LA. 71301
(504) 478-2100
CONTACT: WEBLEY MILLER

MURPHY OIL USA, INC.
200 PEACH STREET
EL DORADO, AR 71730

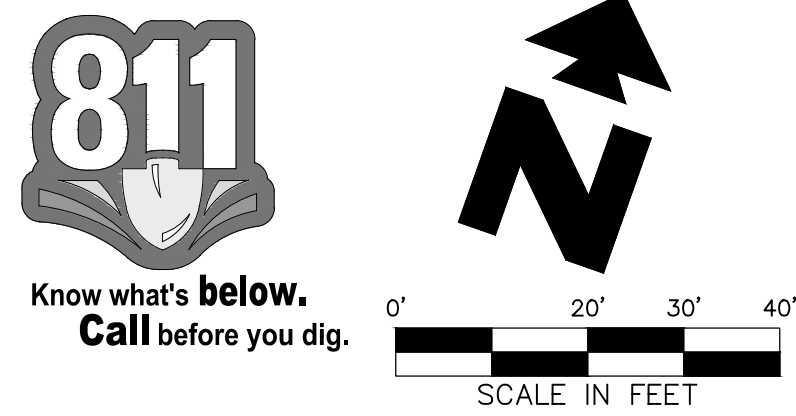
MURPHY USA

PARCEL AREA

62,027.39± SQ. FT.
1.42± ACRES

THESE DRAWINGS DO NOT INCLUDE COMPONENTS FOR CONSTRUCTION SAFETY.

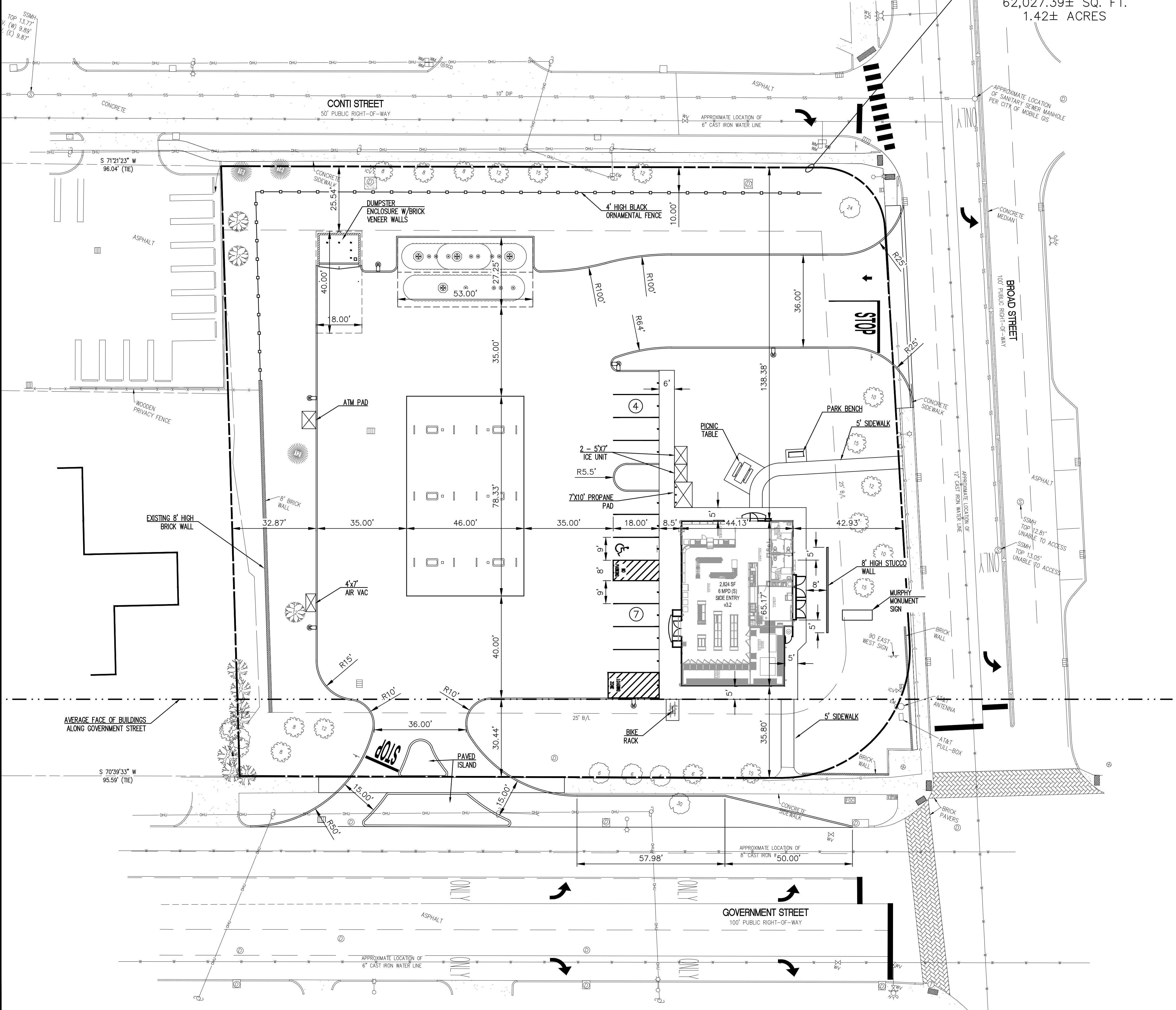
THE LOCATION OF EXISTING UNDERGROUND UTILITIES ARE SHOWN IN AN APPROXIMATE WAY ONLY. THE CONTRACTOR SHALL DETERMINE THE EXACT LOCATION OF ALL EXISTING UTILITIES BEFORE COMMENCING WORK. HE AGREES TO BE FULLY RESPONSIBLE FOR ANY AND ALL DAMAGES WHICH MIGHT BE OCCASIONED BY HIS FAILURE TO EXACTLY LOCATE AND PRESERVE ANY AND ALL UNDERGROUND UTILITIES.



EXISTING		PROPOSED	
—○—○—	PROPERTY LINE	—	BOUNDARY LINE
—○—○—	UTILITY POLE (UP), OVERHEAD LINES & GUY	—	CONCRETE CURB AND GUTTER
—○—○—	SANITARY SEWER MANHOLE (SSMH)	—	BUILDING CONTROL POINT
—○—○—	DOUBLE-WING CATCH BASIN	—	
—○—○—	SINGLE-WING CATCH BASIN	—	
—○—○—	FENCE	—	
—○—○—	EXISTING 5 FOOT CONTOUR	—	
—○—○—	EXISTING 1 FOOT CONTOUR	—	
—○—○—	EXISTING GRADE SPOT ELEVATION	—	
—○—○—	RECORDED DATA	—	
○	LIGHT POLE (LP)		
⊕	FIRE HYDRANT		
⊕	WATER VALVE		
⊕	STREET SIGN		
⊕	DRAINAGE MANHOLE		
⊕	RIGHT-OF-WAY		
⊕	REBAR PIN FOUND		
⊕	REBAR PIN SET		
⊕	REINFORCED CONC. PIPE		
⊕	CORRUGATED METAL PIPE		

- GENERAL SITE NOTES**
- ALL DIMENSIONS SHOWN ARE TO THE FACE OF CURB UNLESS OTHERWISE NOTED.
 - ALL CURB RETURN RADII SHALL BE 3', AS SHOWN TYPICAL ON THIS PLAN, UNLESS OTHERWISE NOTED.
 - UNLESS OTHERWISE SHOWN, CALLED OUT OR SPECIFIED HEREON:
 - ALL CURB AND GUTTER ADJACENT TO PAVING SHALL BE INSTALLED PER DETAIL.
 - PAVEMENT SHALL BE INSTALLED IN ACCORDANCE WITH THE PAVING PLAN OVER THE ENTIRE PARKING LOT AREA AND ALL APPROACH DRIVES.
 - SEE ASSOCIATED PLANS FOR CANOPY, COLUMN, DISPENSER ISLAND DETAILS AND LAYOUT.
 - CONTRACTOR SHALL BEGIN CONSTRUCTION OF ANY LIGHT POLE BASES FOR RELOCATED LIGHT FIXTURES AND RELOCATION OF ELECTRICAL SYSTEM AS SOON AS DEMOLITION BEGINS. CONTRACTOR SHALL BE AWARE THAT INTERRUPTION OF POWER TO ANY LIGHT POLES OR SIGNS SHALL NOT EXCEED 24 HOURS.
 - ALL SLOPES AND AREAS DISTURBED BY CONSTRUCTION SHALL BE GRADED SMOOTH AND FOUR INCHES OF TOPSOIL APPLIED. IF ADEQUATE TOPSOIL IS NOT AVAILABLE ON SITE, THE CONTRACTOR SHALL PROVIDE TOPSOIL, APPROVED BY THE OWNER, AS NEEDED. THE AREA SHALL THEN BE SEEDED/SODDED, FERTILIZED, MULCHED, WATERED AND MAINTAINED UNTIL HARDY GRASS GROWTH IS ESTABLISHED IN ALL AREAS. ANY AREAS DISTURBED FOR ANY REASON PRIOR TO FINAL ACCEPTANCE OF THE PROJECT SHALL BE CORRECTED BY THE CONTRACTOR AT NO ADDITIONAL COST TO THE OWNER.
 - CONTRACTOR SHALL PURCHASE AND INSTALL A MAILBOX AND SHALL COORDINATE LOCATION OF MAILBOX WITH MURPHY CONSTRUCTION MANAGER AND/OR ON-SITE REPRESENTATIVE AND LOCAL POSTMASTER.
 - ALL PROPOSED PAVEMENT STRIPING OR MARKINGS SHALL FOLLOW THE SPECIFICATIONS FOR PAINT INCLUDED IN DETAIL 10A.

PARKING INFORMATION:						
DESCRIPTION	BUILDING AREA (S.F.)	REQUIRED:		SPACES		
		RATIO	REGULAR	UNDER CANOPY	ACCESSIBLE	TOTAL
FUELING STATION	2,824	1/300 S.F.	9		1	10
		PROVIDED:				
		1/123 S.F.	10	12	1	23
NO. OF FUEL ISLANDS: 6		NO. OF VEHICLE FUELING POINTS: 12				



SHEET NO. 1

SITE PLAN
MURPHY USA (NTJ)
900 GOVERNMENT STREET
MOBILE ALABAMA

PAN AMERICAN ENGINEERS, LLC
1717 JACKSON STREET
ALEXANDRIA, LA. 71301
(504) 475-2100
CONTACT: SAM GABRIOTT

MURPHY OIL USA, INC.
200 PEACH STREET
EL DORADO, AR 71730

MURPHY USA



MURPHY OIL USA, INC.



200 PEACH STREET
EL DORADO, AR 71730

PAE JOB NO. 12724



PAN AMERICAN ENGINEERS, LLC

1717 JACKSON STREET
ALEXANDRIA, LA. 71301
(504) 475-2100
CONTACT: SAM GASSIOTT

REV-1 8/27/24 TCD PRN SG JNS JNS JNS

PROPOSED FENCE

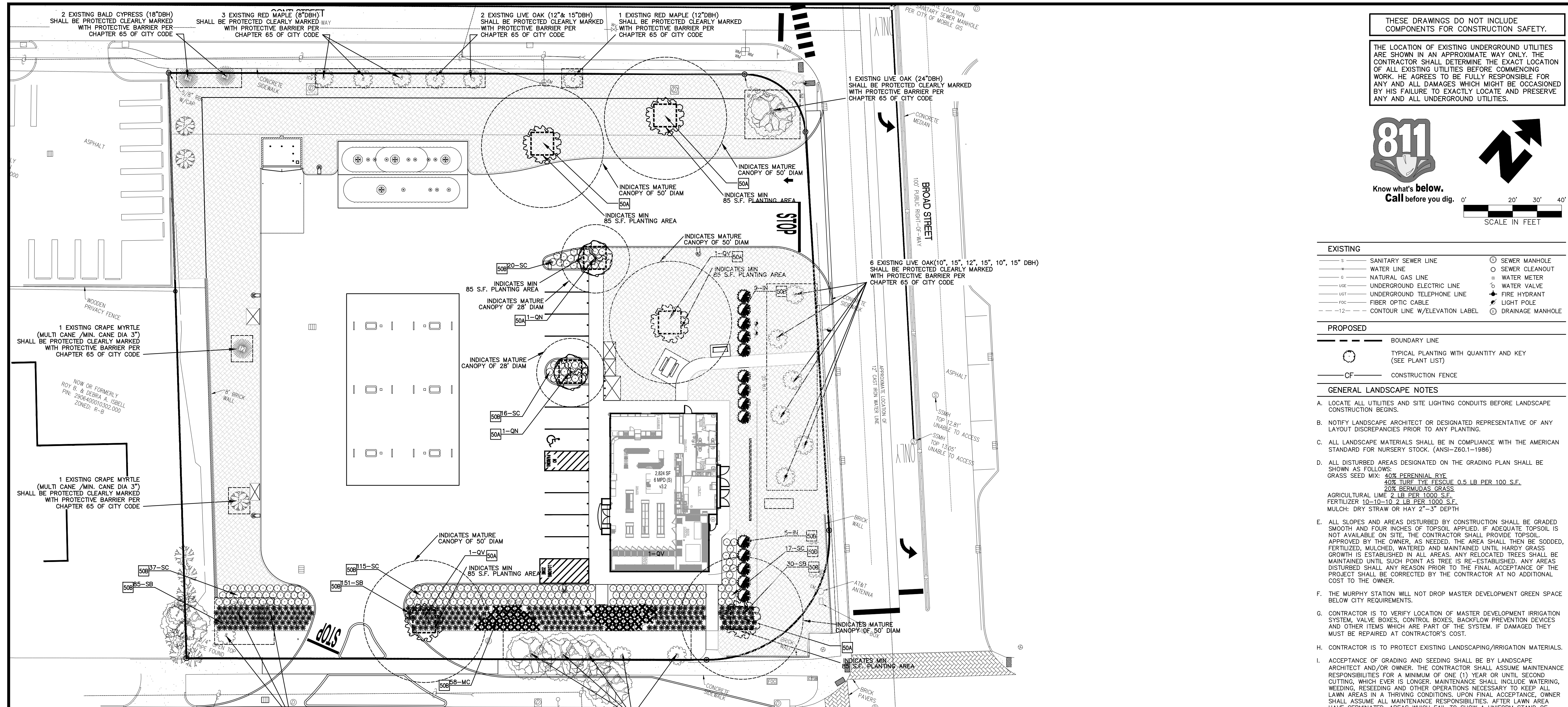
MURPHY USA (NTJ)

900 GOVERNMENT STREET

MOBILE ALABAMA

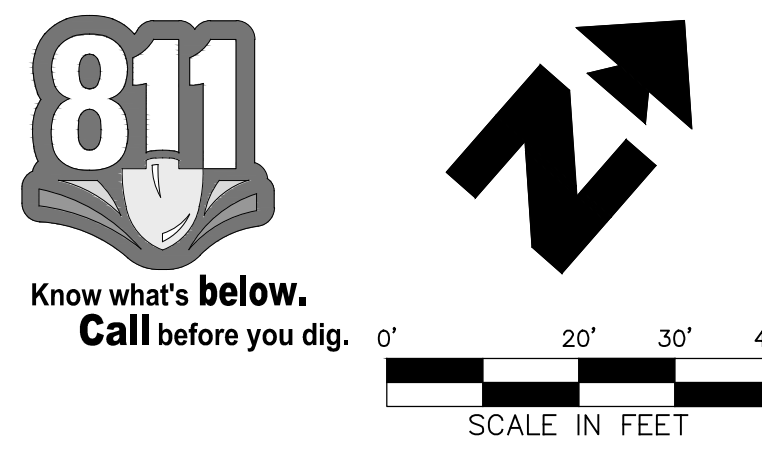
SHEET NO.

2



THESE DRAWINGS DO NOT INCLUDE COMPONENTS FOR CONSTRUCTION SAFETY.

THE LOCATION OF EXISTING UNDERGROUND UTILITIES ARE SHOWN IN AN APPROXIMATE WAY ONLY. THE CONTRACTOR SHALL DETERMINE THE EXACT LOCATION OF ALL EXISTING UTILITIES BEFORE COMMENCING WORK. HE AGREES TO BE FULLY RESPONSIBLE FOR ANY AND ALL DAMAGES WHICH MIGHT BE OCCASIONED BY HIS FAILURE TO EXACTLY LOCATE AND PRESERVE ANY AND ALL UNDERGROUND UTILITIES.



EXISTING		PROPOSED	
—S—	SANITARY SEWER LINE	○	SEWER MANHOLE
—W—	WATER LINE	○	SEWER CLEANOUT
—G—	NATURAL GAS LINE	○	WATER METER
—UE—	UNDERGROUND ELECTRIC LINE	○	WATER VALVE
—UGT—	UNDERGROUND TELEPHONE LINE	○	FIRE HYDRANT
—FOC—	FIBER OPTIC CABLE	○	LIGHT POLE
—C—	CONTOUR LINE W/ELEVATION LABEL	○	DRAINAGE MANHOLE

GENERAL LANDSCAPE NOTES

- LOCATE ALL UTILITIES AND SITE LIGHTING CONDUITS BEFORE LANDSCAPE CONSTRUCTION BEGINS.
- NOTIFY LANDSCAPE ARCHITECT OR DESIGNATED REPRESENTATIVE OF ANY LAYOUT DISCREPANCIES PRIOR TO ANY PLANTING.
- ALL LANDSCAPE MATERIALS SHALL BE IN COMPLIANCE WITH THE AMERICAN STANDARD FOR NURSERY STOCK. (ANSI-Z60.1-1986)
- ALL DISTURBED AREAS DESIGNATED ON THE GRADING PLAN SHALL BE SHOWN AS FOLLOWS:
 GRASS SEED MIX: 40% PERENNIAL RYE
 40% TURF-TYPE FESCUE 0.5 LB PER 100 S.F.
 20% BERMUDA GRASS
 AGRICULTURAL LIME 2 LB PER 1000 S.F.
 FERTILIZER 10-10-10 2 LB PER 1000 S.F.
 MULCH: DRY STRAW OR HAY 2"-3" DEPTH

- ALL SLOPES AND AREAS DISTURBED BY CONSTRUCTION SHALL BE GRADED SMOOTH AND FOUR INCHES OF TOPSOIL APPLIED. IF ADEQUATE TOPSOIL IS NOT AVAILABLE ON SITE, THE CONTRACTOR SHALL PROVIDE TOPSOIL APPROVED BY THE OWNER, AS NEEDED. THE AREA SHALL THEN BE SODDED, FERTILIZED, MULCHED, WATERED AND MAINTAINED UNTIL HARDY GRASS GROWTH IS ESTABLISHED IN ALL AREAS. ANY RELOCATED TREES SHALL BE MAINTAINED UNTIL SUCH POINT AS TREE IS RE-ESTABLISHED. ANY AREAS DISTURBED SHALL ANY REASON PRIOR TO THE FINAL ACCEPTANCE OF THE PROJECT SHALL BE CORRECTED BY THE CONTRACTOR AT NO ADDITIONAL COST TO THE OWNER.
- THE MURPHY STATION WILL NOT DROP MASTER DEVELOPMENT GREEN SPACE BELOW CITY REQUIREMENTS.
- CONTRACTOR IS TO VERIFY LOCATION OF MASTER DEVELOPMENT IRRIGATION SYSTEM, VALVE BOXES, CONTROL BOXES, BACKFLOW PREVENTION DEVICES AND OTHER ITEMS WHICH ARE PART OF THE SYSTEM. IF DAMAGED THEY MUST BE REPAIRED AT CONTRACTOR'S COST.
- CONTRACTOR IS TO PROTECT EXISTING LANDSCAPING/IRRIGATION MATERIALS.
- ACCEPTANCE OF GRADING AND SEEDING SHALL BE BY LANDSCAPE ARCHITECT AND/OR OWNER. THE CONTRACTOR SHALL ASSUME MAINTENANCE RESPONSIBILITIES FOR A MINIMUM OF ONE (1) YEAR OR UNTIL SECOND CUTTING, WHICH EVER IS LONGER. MAINTENANCE SHALL INCLUDE WATERING, WEEDING, RESEEDING AND OTHER OPERATIONS NECESSARY TO KEEP ALL LAWN AREAS IN A THRIVING CONDITIONS. UPON FINAL ACCEPTANCE, OWNER SHALL ASSUME ALL MAINTENANCE RESPONSIBILITIES. AFTER LAWN AREA HAVE GERMINATED, AREAS WHICH FAIL TO SHOW A UNIFORM STAND OF GRASS FOR ANY REASON WHATSOEVER SHALL BE RE-SEEDED REPEATEDLY UNTIL ALL AREAS ARE COVERED WITH A SATISFACTORY STAND OF GRASS. MINIMUM ACCEPTANCE OF SEEDED LAWN AREAS MAY INCLUDE SCATTERED BARE SPOTS, NONE OF WHICH ARE LARGER THAN 1 SQUARE FOOT, AND WHEN COMBINED DO NOT EXCEED 2% OF TOTAL SEEDED LAWN AREA.
- ALL PERMANENT TURF AREAS SHALL BE SOD.
- FERTILIZE ALL PLANTS AT THE TIME OF PLANTING WITH TIME RELEASE FERTILIZER.
- SEE GRADING PLAN FOR APPLICATION OF TOPSOIL AND MAINTENANCE OF SEEDED AREAS.
- SHREDDED HARDWOOD MULCH SHALL BE USED AS A FOUR INCH (4") TOP DRESSING IN ALL PLANT BEDS AND AROUND ALL TREES, SINGLE TREES OR SHRUBS SHALL BE MULCHED TO THE OUTSIDE EDGE OF THE SAUCER OR LANDSCAPE ISLAND (SEE PLANTING DETAILS).
- PLANT MATERIAL SHALL BE WARRANTED FOR A PERIOD OF 1 YEAR AFTER PLANTING; IF ANY PLANTS DIE BEFORE THEY END OF 1 YEAR THEY SHALL BE REPLACED, AT NO COST TO THE OWNER, BY A PLANT OF SIMILAR SIZE AND SPECIES.
- TREES SHALL BE PLANTED PER DETAIL 50A.
- GC SHALL INCORPORATE PRE-EMERGENT HERBICIDE AND WEED BARRIER FABRIC IN MULCH AND PLANTING AREAS.

LANDSCAPE CALCULATIONS

1. TOTAL LOT AREA 75,051 S.F.
 62,027 SF x 12% = 7,443 SF REQUIRED
 PROVIDED: 4,223 SF BED AREA
 21,869 S.F. SOD AREA
 =26,092 S.F. (42%)

DECIDUOUS TREE PLANTING LEGEND

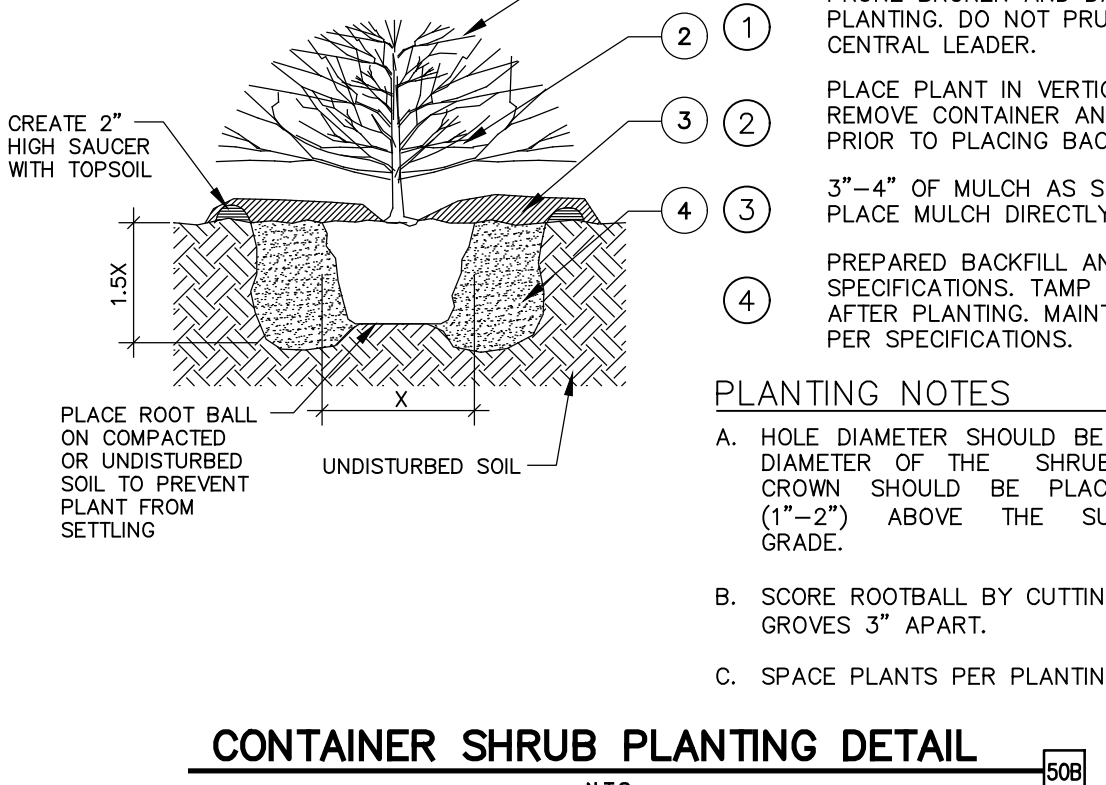
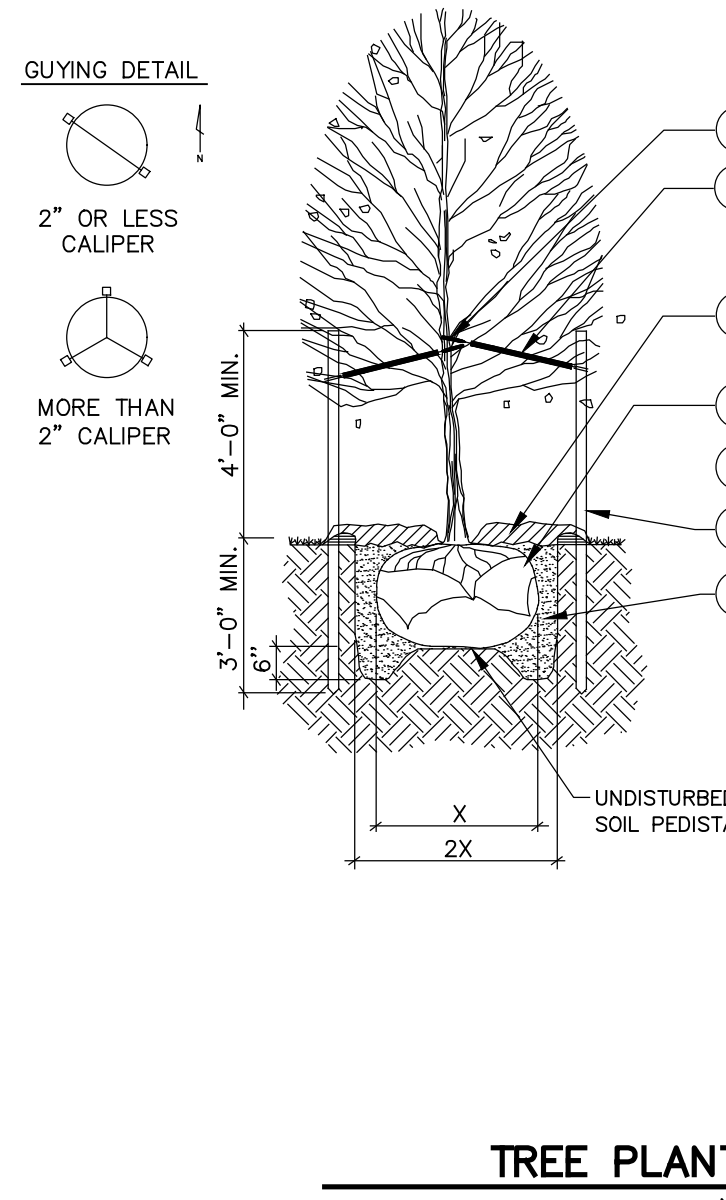
- SYMBOL DESCRIPTION**
- TREE STRAP LOOP AT FIRST BRANCH. USE RUBBER HOSE OR APPROVED EQUAL TO PREVENT DAMAGE TO TREE.
 - 12 GAUGE GALVANIZED WIRE & 1 1/2" PVC PIPE
 - 4" ORGANIC MULCH PER SPECIFICATIONS. DO NOT PLACE MULCH AGAINST TREE TRUNK.
 - REMOVE WIRE BASKET AND REMOVE BURLAP & ROPE FROM TOP 1/3 OF ROOT BALL.
 - TREE SAUCER (FORMED BY MIN. 4" THICK MULCH).
 - 8" METAL TEE STAKE. KEEP STAKE PLUMB AND SECURE OUTSIDE OF TREE PIT.
 - PREPARED BACKFILL - TAMP TO PREVENT SETTLEMENT. SOAK BACK FILL AFTER PLANTING

- PLANTING NOTES**
- RETAIN NATURAL SHAPE. DO NOT SHEAR OR CUT CENTRAL LEADER. TREES WITH CENTRAL LEADERS ARE NOT ACCEPTED IF LEADER IS DAMAGED OR REMOVED.
 - PRUNE ALL DAMAGED TWIGS AFTER PLANTING.
 - WRAP TREES TO FIRST BRANCH IF PLANTED IN FALL. DO NOT WRAP IF PLANTED IN SPRING.
 - TREES TO BE INSTALLED SO TOP OF ROOT BALLS LEVEL WITH ADJACENT GRADE. TREE SHALL BEAR SAME RELATION TO FINISH GRADE AS MAINTAINED AT NURSERY.
 - PLACE TREE BALL ON FIRM UNDISTURBED SOIL.
 - IF POSSIBLE MARK TREE TRUNK ON THE NORTHERN SIDE AT THE NURSERY AND PLANT TREE WITH MARK FACING NORTH.
 - TOPSOIL USED SHALL BE AS SPECIFIED IN THE LANDSCAPE SPECIFICATIONS.

SHRUB PLANTING LEGEND

- SYMBOL DESCRIPTION**
- PRUNE BROKEN AND DAMAGED TWIGS AFTER PLANTING. DO NOT PRUNE OR DAMAGE CENTRAL LEADER.
 - PLACE PLANT IN VERTICAL, PLUMB POSITION. REMOVE CONTAINER AND PLANT LABEL PRIOR TO PLACING BACKFILL.
 - 3"-4" OF MULCH AS SPECIFIED. DO NOT PLACE MULCH DIRECTLY AGAINST STEMS.
 - PREPARED BACKFILL AND FERTILIZE PER SPECIFICATIONS. TAMP AND SOAK BACKFILL AFTER PLANTING. MAINTAIN AFTER PLANTING PER SPECIFICATIONS.

- PLANTING NOTES**
- HOLE DIAMETER SHOULD BE AT LEAST TWICE THE DIAMETER OF THE SHRUB ROOT BALL. SHRUB CROWN SHOULD BE PLACED SLIGHTLY HIGHER (1"-2") ABOVE THE SURROUNDING FINISHED GRADE.
 - SCORE ROOTBALL BY CUTTING 1/8"-1/4" VERTICAL GROVES 3" APART.
 - SPACE PLANTS PER PLANTING PLAN.



PLANT MATERIAL LIST		
KEY	QNTY.	ITEM
QN	2	NUTTALL OAK / QUERCUS NUTTALLII 10'-12' HT., 4" CALIPER, FULL CANOPY
QV	5	LIVE OAK / QUERCUS VIRGINIANA 10'-12' HT., 4" CALIPER, FULL CANOPY
IN	14	NELLIE STEVENS HOLLY / ILLEX X NELLIE R. STEVENS 6' HT., FULL TO GROUND, PRUNED TO SOLID HEDGE
CS	205	SHI SHI SASANQUA / CAMELLIA SASANQUA 'SHI SHI GASHIRA' 3"GAL. 24" MIN HT. FULL SPREAD
MC	58	MUHLI GRASS / MUHLENBERGIA CAPILLARIS 3"GAL. 24" MIN HT. FULL SPREAD
SB	266	CEDAR FERN / SELLAGINELLA BRAUNNII 3"GAL. 18" MIN HT. FULL SPREAD
	21,869 S.F.	BERMUDA SOD / CYNODON TRANSVAALENSIS X C. DACTYLON SEE SPECIFICATIONS-CONTRACTOR RESPONSIBLE FOR VERIFICATION OF QUANTITIES
LUMP SUMP		GUARANTEE PERIOD - (1) ONE YEAR

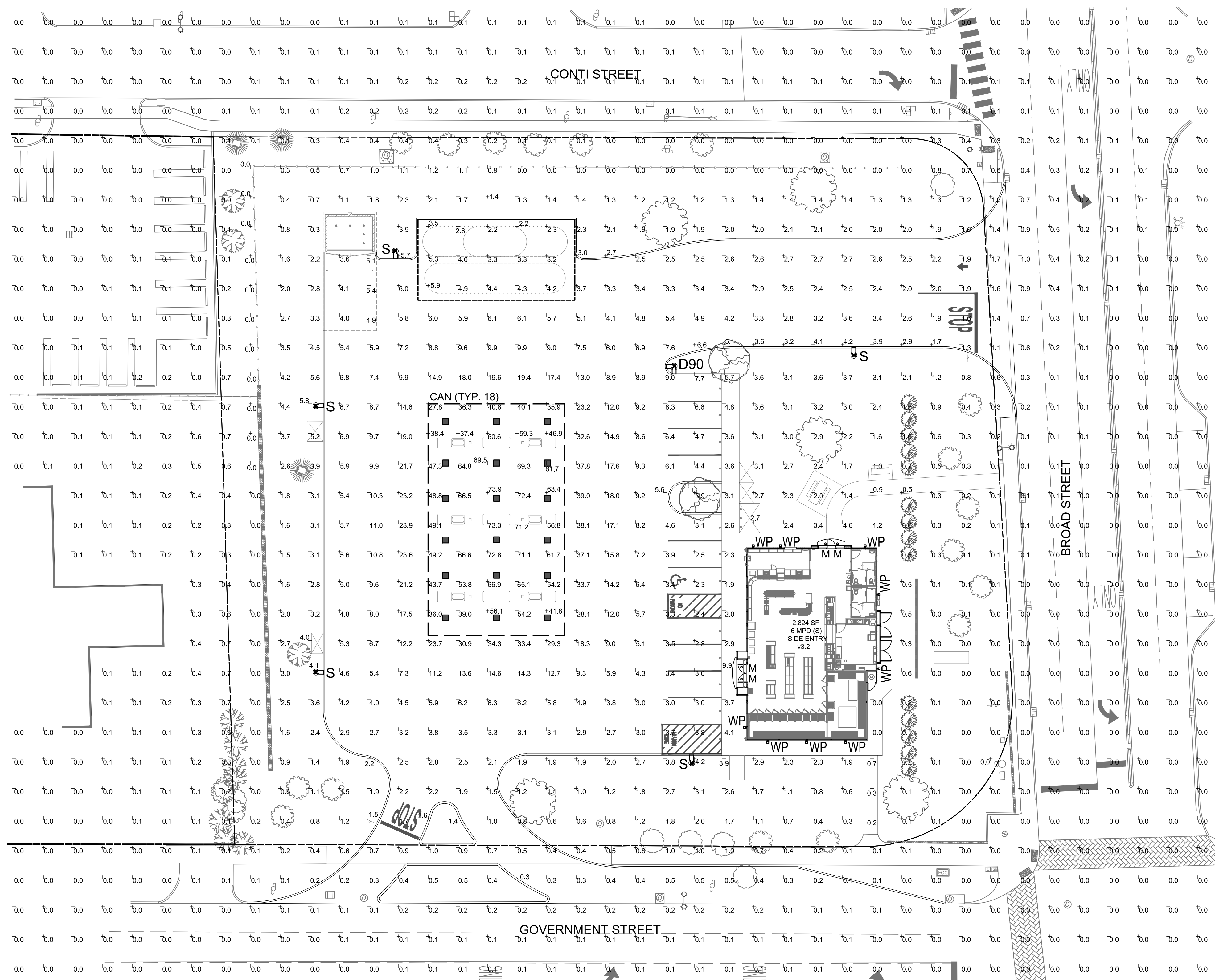
SHEET NO. LP-1

LANDSCAPE PLAN
MURPHY USA
900 GOVERNMENT STREET
MOBILE ALABAMA

PAN AMERICAN ENGINEERS, LLC
1717 JACKSON STREET
ALEXANDRIA, LA. 71301
(318) 475-2100

MURPHY OIL USA, INC.
200 PEACH STREET
EL DORADO, AR 71730

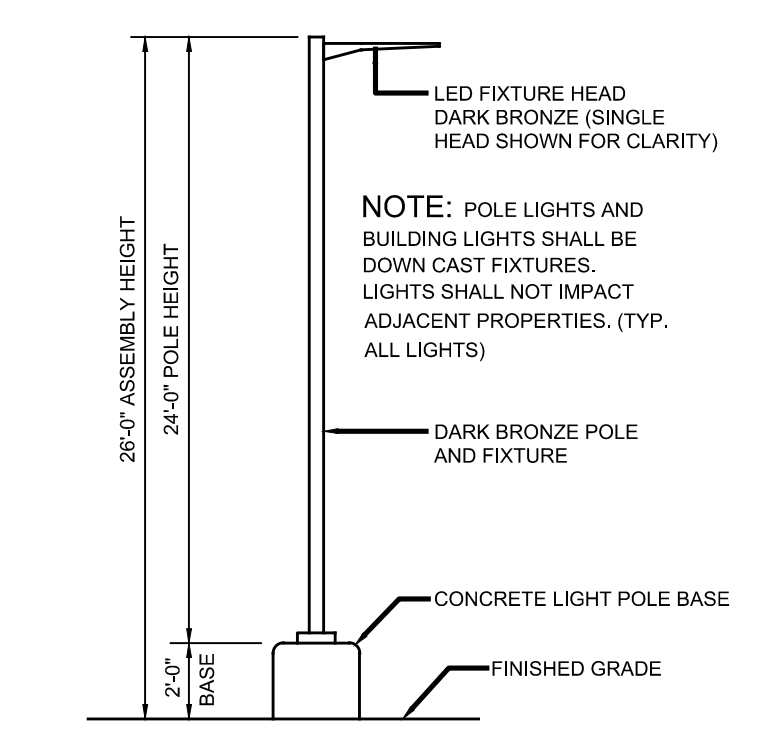
MURPHY USA



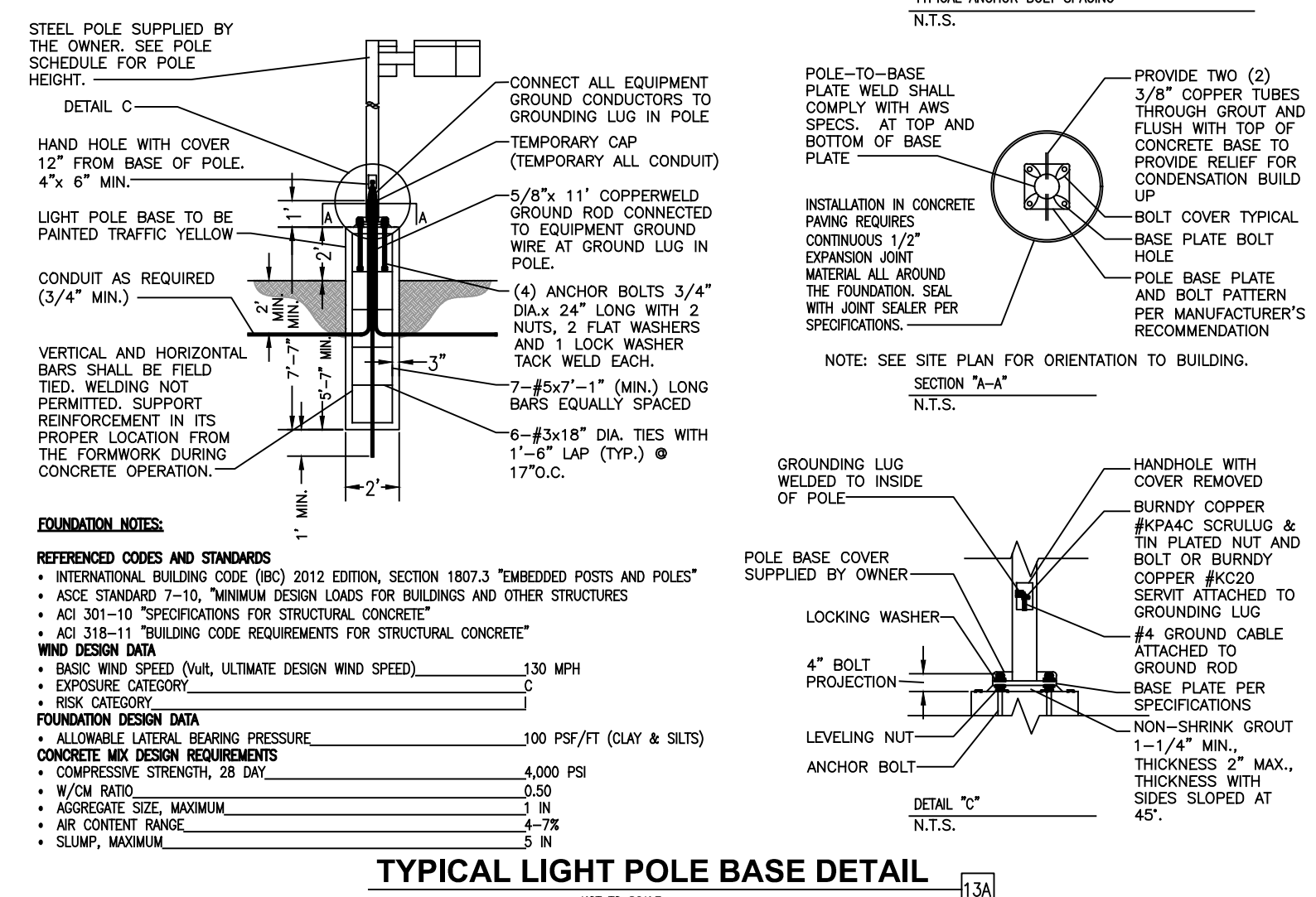
1 PHOTOMETRIC SITE PLAN
SCALE: 1"=20'-0"

NOTES:
 PLAN WAS BASED ON THE INFORMATION PROVIDED. ALL DIMENSIONS, LUMINAIRE LOCATIONS SHOWN REPRESENT RECOMMENDED POSITIONS. THE ENGINEER AND/OR ARCHITECT MUST DETERMINE APPLICABILITY OF THE LAYOUT TO EXISTING OR FUTURE FIELD CONDITIONS.
 THE CALCULATED PHOTOMETRIC LEVELS MAY OR MAY NOT MEET CERTAIN STANDARDS OR RECOMMENDED PRACTICES OF IESNA.
 THE PHOTOMETRIC PLAN REPRESENTS ILLUMINATION LEVELS CALCULATED FROM LABORATORY DATA TAKEN UNDER CONTROLLED CONDITIONS UTILIZING CURRENT INDUSTRY STANDARD LAMP RATINGS IN ACCORDANCE WITH ILLUMINATING ENGINEERING SOCIETY (IES) APPROVED METHODS. LABORATORY TESTS ARE MADE UNDER OPTIMUM CONDITION WITH LAMP OUTPUT AT RATED VALUE, AND IN ACCORDANCE WITH ILLUMINATING ENGINEERING SOCIETY APPROVED METHODS.
 ACTUAL ILLUMINATION LEVELS MAY DIFFER DUE TO VARIABLE FIELD CONDITIONS SUCH AS, BUT NOT LIMITED TO, VARIANCE IN LAMP LUMEN OUTPUT; LAMP TILT FACTOR; BALLAST WATTAGE OUTPUT; LINE VOLTAGE AT BALLAST; REFLECTOR SPECULARITY; LAMP LUMEN DEPRECIATION; AND LUMINAIRE DIRT DEPRECIATION.
 THE 26'-0" MOUNTING HEIGHT IS THE ACTUAL ASSEMBLY (POLE, BASE, AND FIXTURE) AND MAY DIFFER FROM THE FROM THE LUMINAIRE'S LUMINOUS APERTURE.
 THIS PLAN IS FOR RELATIVE LAYOUT AND SCOPE OF WORK PURPOSES ONLY. REFER TO SITE PLAN PREPARED BY LOCAL CONSULTANT FOR RELATIONSHIP OF THESE LUMINAIRES AND THEIR LOCATIONS TO EXISTING STRUCTURES AND REFERENCE.

CONTRACTOR TO ENSURE THE LIGHT POLE AND HANDICAP PARKING SIGN ARE AT LEAST 2' FROM THE BACK OF CURB TO PREVENT VEHICLES FROM STRIKING THE LIGHT POLE OR HANDICAP PARKING SIGN. PROPOSED LIGHT POLE BASES SHOWN AT A MINIMUM OF 2'-0" FROM BACK OF CURB TO CENTER OF POLE/BASE. ENGINEER TO VERIFY PROPOSED LOCATIONS FOR ANY CONFLICTS OR MISPLACEMENTS. REPORT TO LIGHTING DESIGNER ANY DISCREPANCIES OR CONFLICTS



2 AREA LIGHT DETAIL
SCALE: NOT TO SCALE



TYPICAL LIGHT POLE BASE DETAIL
NOT TO SCALE

LUMINAIRE SCHEDULE								
MOUNTING CONFIG	SYMBOL	QTY	ASSEMBLY HEIGHT	POLE HEIGHT	LUMENS	TOTAL WATTS	MODEL NUMBER	DESCRIPTION
S		5	26'-0"	24'-0"	18904	135	SLM-18L-SIL-FT-UNV-50-70-BRZ	LSI LIGHTING, SLICE MEDIUM LED SERIES AREA LIGHT, 18,000 LUMENS PACKAGE, 5000K 70 CRI, SINGLE HEAD FLAT LENS FIXTURE, FORWARD THROW
D90		1	26'-0"	24'-0"	18904	270	SLM-18L-SIL-FT-UNV-50-70-BRZ	LSI LIGHTING, SLICE MEDIUM LED SERIES AREA LIGHT, 18,000 LUMENS PACKAGE, 5000K 70 CRI, DOUBLE HEAD FLAT LENS FIXTURE, FORWARD THROW. SEE NOTE BELOW
CAN		18	15'-0"	N/A	19071	125	CRUS-SC-LED-HO-50-UE-WHT	LSI LIGHTING, LEGACY SERIES, HIGH OUTPUT DRIVER, FLAT LENS CANOPY FIXTURE
WP		9	9'-0"	N/A	988	160	TUSCANY COLLECTION	GRAND LIGHT, TUSCANY COLLECTION TRADITIONAL OUTDOOR WALL LIGHT, (4)-40W CANDELABRA LAMPS, FINISH OPTIONS AND GLASS OPTIONS TO BE DETERMINED
M		4	8'-8"	N/A	2333	22	LCD6LED25LUNVDIM135WF TR6RWVHAZ EM	LSI LIGHTING, LCD6 DOWN LIGHT LUMINAIRE, 3500K CCT, 2500 LUMENS, WIDE FLOOD HAZE SEMI-DIFFUSED WALL WASH REFLECTOR, WHITE OR EQUIVALENT

NOTES: ALL AREA SITE LIGHT FIXTURES AND POLES TO BE MOUNTED ON CONCRETE BASE PER DETAIL, THIS SHEET
 ALL ANCHOR BOLTS TO BE ORIENTED IN THE SAME DIRECTION (SQUARE) AT INSTALLATION PER MANUFACTURER'S SPECIFICATIONS.
 ALL PROPOSED FIXTURES ARE FULL CUT-OFF FIXTURES

POLE SCHEDULE					
MOUNTING CONFIG	SYMBOL	QTY	POLE HEIGHT	MODEL NUMBER	DESCRIPTION
S		3	24'-0"	4SQB3-S11G-24-S-BRZ-4BC	LSI LIGHTING, STEEL SQUARE POLE, BOLT-ON ARM MOUNT, BRONZE
D90		1	24'-0"	4SQB3-S11G-24-D90-BRZ-4BC	LSI LIGHTING, STEEL SQUARE POLE, BOLT-ON ARM MOUNT, BRONZE

NOTES: ALL AREA SITE LIGHT FIXTURES AND POLES TO BE MOUNTED ON CONCRETE BASE PER DETAIL, THIS SHEET. POLES RATED TO 130 MPH WIND VELOCITY

DESIGNER	JMG	DATE	2/19/2024
DRAWN BY	JMG	DATE	8/27/2024
REVISION	1	REVISION	REVISION PER COMMENT
	2		REVISION PER CIVIL CHANGES

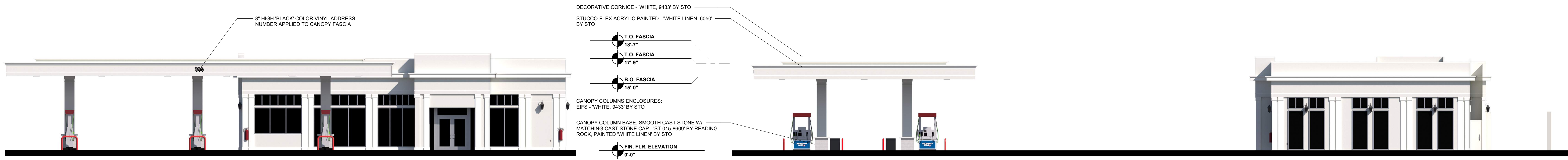
MURPHY USA
 5500 Greenwood Plaza Blvd., Suite 200
 Greenwood Village, CO 80111
 303.770.8884
 galwayus.com

MURPHY USA
MOBILE, ALABAMA
 900 Government Street

Project No: MOC9994
 Sheet Scale: 1"=20'-0"
 Date: November, 2023
 Disk File: T:\Photometric-Mobile, AL (Broad) #7344

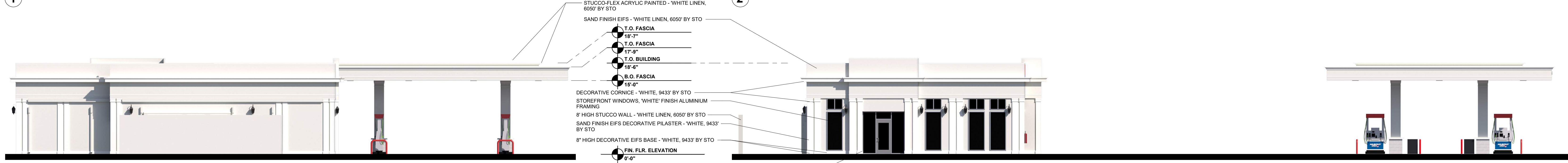
PHOTOMETRIC SITE PLAN

L-1.0



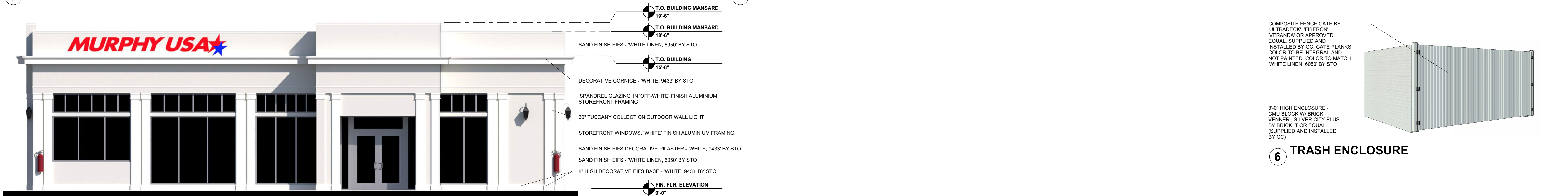
1 ELEVATION - FRONT (FACING WEST)

2 ELEVATION - RIGHT (FACING SOUTH) GOVERNMENT STREET

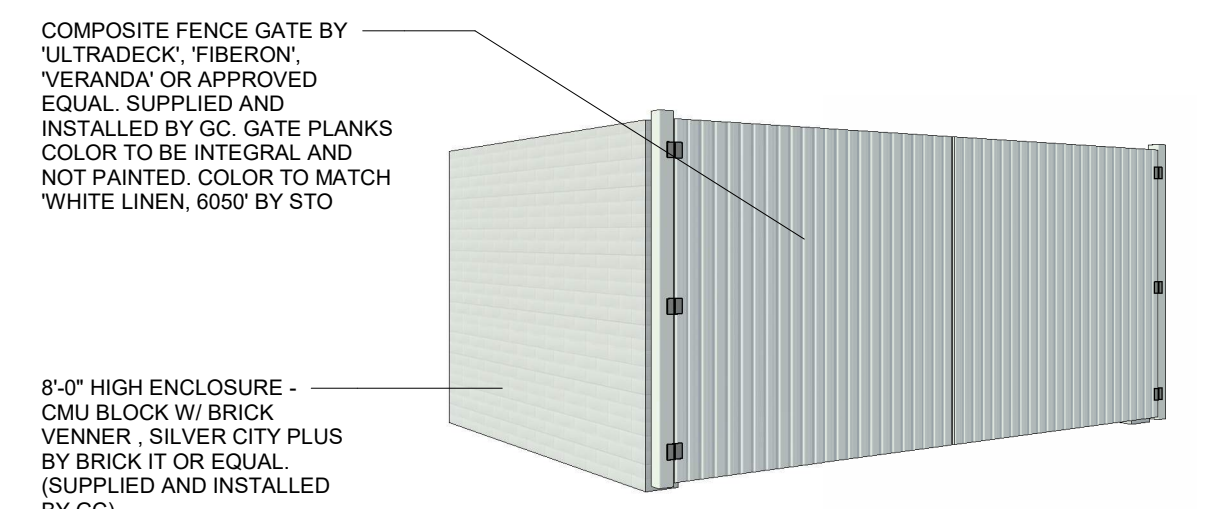


3 ELEVATION - REAR (FACING EAST) BROAD STREET

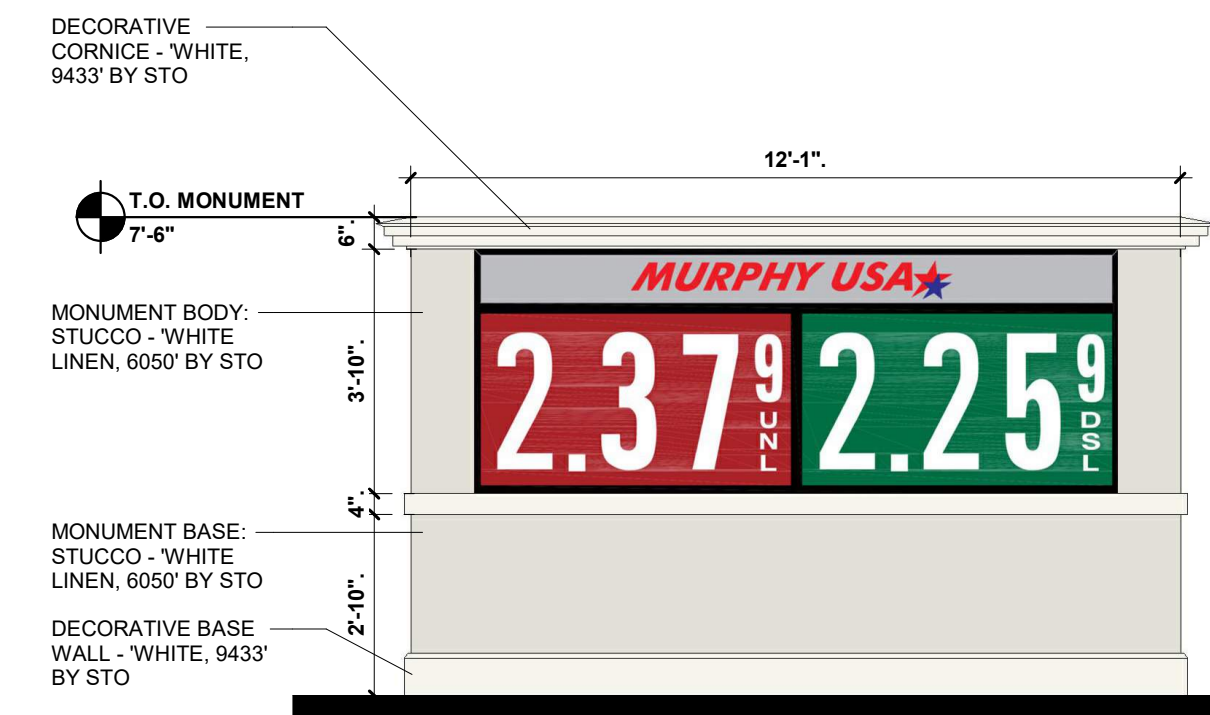
4 ELEVATION - LEFT (FACING NORTH) CONTI STREET



5 ELEVATION - FRONT BUILDING ONLY (FACING WEST)



6 TRASH ENCLOSURE



7 MONUMENT SIGN

SIGNAGE COLOR CHART			
BUILDING - ROUTED SIGNS FURNISHED AND INSTALLED BY FMS			
MURPHY USA STAR LOGO	BLUE	EASTMAN BLUE, PANTONE 287 BLUE 3M 3630-67 ROYAL BLUE	
	RED	PROGRAM RED, PANTONE 485 RED 3M 3630-43 RED	
	WHITE	EASTMAN WHITE	
MONUMENT - PRICE SIGNS FURNISHED AND INSTALLED BY THE SIGN VENDOR			
MURPHY USA STAR LOGO	BLUE	3M 3632-157	
	RED	3M 3632-43	
	SILVER	3M 3630-121	
UNLEADED	CABINET	BLACK	
	RED	3M 3632-73	
	WHITE	3M 3632-20	
DIESEL	DIGIT	RED/WHITE	
	CABINET	BLACK	
	GREEN	3M 3632-26	
	WHITE	3M 3632-20	
	DIGIT	GREEN/WHITE	
	CABINET	BLACK	

BUILDING SIGNS:	QTY:	HEIGHT	WIDTH	AREA S.F.	TOTAL S.F.
MURPHY USA BLDG. LOGO SIGN	1		GRAPHIC AREA	47.9	47.9
BUILDING & CANOPY SIGNS TOTAL SIGNAGE :				47.9 S.F.	
MONUMENT SIGN:	QTY:	HEIGHT	WIDTH	AREA S.F.	TOTAL S.F.
UNL / DSL W/LOGO	1	46"	120"	38.33	38.33
MONUMENT SIGNS TOTAL SIGNAGE :				38.33 S.F.	
TOTAL SIGN AREA :				86.23 S.F.	



MOBILE, AL (900 GOVERNMENT STREET) R07
MURPHY #7944
SEPTEMBER 16, 2024